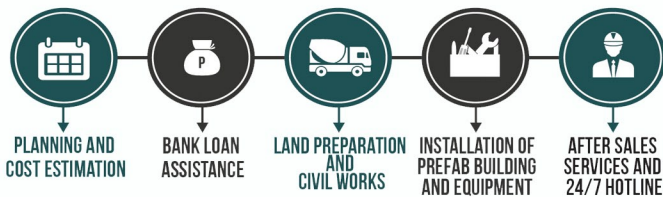


ABOUT US

A duly registered Philippine Corporation primarily engaged in providing modern high quality equipment and pre-fabricated houses for poultry and livestock. MFC's partnership with industry leaders in the region and our dedicated support to customers enables us to become a benchmark of quality for providing agricultural products and services.

Why Choose Us?



Slatted Broiler House

MAAGIR
Velfarm Group

*Building Farmer's Future Through Quality Prefab Houses
And Modern Equipment for Poultry and Livestock*

CONTACT US

0917 543 2371

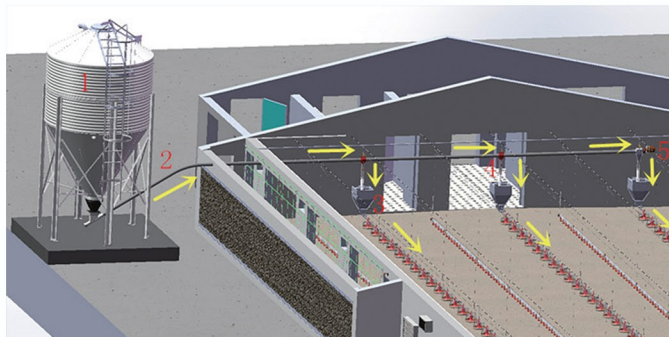
+63 02 7 503 5317

info@maagirfarm.com

Suite 1008-A, 10th Floor, Ermita Center Building,
1350 Roxas Blvd., Ermita, Manila, Philippines

www.maagirfarm.com

Broiler Pan Feeding System



1. (silo) 2. (pvc tube) 3. (feed line) 4. (drop tube) 5. (drive motor)



Main Features of broiler feed pan

- Typical 05 feed pan has 6 feed level, can be manual and automatic adjusted. Other two feed pans have 13 levels to adjust.
- Slide shutter-off can adjust feed amount from complete open to complete close.
- Adjusting the feeding amount of typical 05 pan convenient, fast and accurate.
- Pan plate can be disassembled on the ground working as specialty pan for 0-7 days old chicken.
- V-pan plate design can reduce feed storage at pan bottom. Bird can have fresh feed every day and prevent bird resting in the pan.
- Edge of pan plate tilt towards the center which can avoid the waste of feed.
- Smooth edge can prevent the bird crawl from hurt and make sure safety and comfort feeding.
- Assemble type of the pan in the pipe can be fixed or swing.

Feeding capacity

broiler: 8-12 birds/nipple
birds in cage: 12 birds/nipple
turkey: 20 birds/nipple
duck: 10 birds/nipple
Breeder 10 birds/nipple



Environment Control System

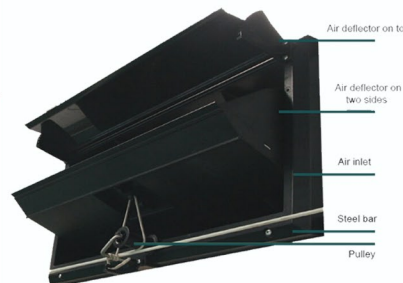
50" Fan---2013 model

- Frame panel, shutter and cone are with high anticorrosive material, hot galvanized material (275g/m²) or superdyma panel, anti corrosive, with good appearance, and incomplete body stamping form.
- detachable shutter body, with easier installation and maintenance
- cross-type blade support, with more reliable fan



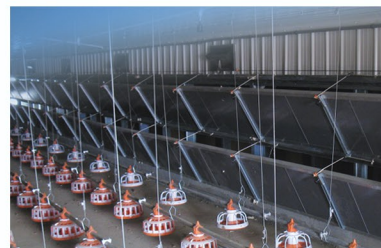
Air inlet

- Made with specially chosen highly qualitated PS project plastics, solid and durable, anti-aging and anti-UV.
- Structure of the upper edges of the windows with air tight design, closer after closing, this design could help your poultry house isolate from outside.
- Wind air directing board situated in both sides of the windows, effectively preventing the wind from blowing down, letting fresh air flush into the center of the birdhouse, spreading it evenly, ideal effect for air exchanging



Panel door

Mounted in the air inlet to the inside of cooling pad, in the cold season off to insulate, in vertical ventilation season to adjust the opening size and fresh air inlet flow.



Advantages of Plastic Slat

- High manure leaking rate, to ensure the floor surface clean and dry
- provide a comfortable and clean space for chickens, reducing the chance of infection in chickens' claw
- Reduce the chance of bacterial infection, improve hatchability
- Open architecture, installation and removal, simple and quick
- Anti-aging material, long life



Cooling Pad

The cooling pad is made of raw material, by sticking wave fiber paper. After integrating some special chemical composition and post-processing, the cooling pad is anticorrosive, high strength, and with long service life. It can supply enough surface area for heat exchange of the water and air and also can purify the air as a natural filter.